

ST JOHN'S WEEKLY NEWS

**SUNDAY
23RD JANUARY**

PASSION FOR LIFE



a passion for life 2022

It's time to get ready!



Passion for Life is about getting churches involved and prepared for mission around Easter. If you would like to learn more please [click here](https://www.apassionforlife.org.uk/). These are being shown at St John's after the Sunday morning service with coffee and will last about 45minutes. There are a lot of videos, (21!), so Matt has picked what he thinks are the most relevant ones to us, to get us thinking about mission events around Easter. You can look at all of them by registering (free) on the website - <https://www.apassionforlife.org.uk/>

Sessions After Sunday Morning Service in the Coffee Lounge

LC2	Loving our Neighbours	Jan 16th
LC3	Loving through Listening and Questions	Jan 23rd
LC5	Answering Tough Questions	Jan 30th
	Prayer/Planning	Feb 6th
IBD1	Why the Journey is Needed	Feb 13th
IBD2	How God sees People	Feb 20th
IBD3	God's Role and Ours	Mar 6th
IBD4	What is the Gospel?	Mar 13th



Living in Love and Faith sets out to inspire people to think more deeply both about what it means to be human, and to live in love and faith with one another.

It raises the tough questions and the divisions among Christians about what it means to be holy in a society in which understandings and practices of gender, sexuality and marriage continue to change.

Living in Love and Faith is supported by films, podcasts and other resources, available for free at the Living in Love and Faith Learning Hub (registration required). [Click here](#)

There are five sessions. It started last Wednesday and the rest will be held on Thursdays, 3rd February, March 3rd, April 7th and April 28th. These are held in the church lounge and will include discussion, prayer and a teaching video so that all members of the Church of England can express a view of these important issues.' You can register your views on a Church of England survey, [Click here](#)



Friday Fellowship is after school for families to come and have some time together and enjoy fellowship. Children have time to play, and parents have time to chat. Then children spend half an hour in age groups exploring faith together and parents will have the opportunity to take part in the Alpha Series.

Then joining together for a meal.

We're serving a simple but tasty child friendly menu to suit all dietary needs. with puddings and drinks.

[Click Here to Book](#)

FAMILY CHURCH

Sundays
4pm
St John's



WE'RE BACK IN THE BUILDING!

Now we're back in St John's, we can use our **toddler zone** again. We have an area designed for pre schoolers to enjoy being in the service, with colourful toys that are easy to clean.

The activities in the toddler zone are designed to be quiet (but super fun) toys so that parents can relax and be free to engage with the service.

This week we're looking at Jesus' identity as seen as he displays his authority. The Christianity Explored course, also follows the book of Mark so we may well send out the videos for a mid week ponder.

For now everyone over 11yrs is still required to wear a **face mask** if you can and if possible, take a LFT before attending. Thank you for your patience and cooperation.

Church Connect WhatsApp groups

It is the main way we communicate all things Family Church so if you would like to connect with others, contact Kim or Richard by [clicking here](#)

All are welcome to attend Family Church. You can expect contemporary worship, a creative Bible reading, a shorter sermon, children's crafts and activities and a relaxed atmosphere.

[Click Here to Book](#)

SYG Sunday Youth Group meets at 6:30-8pm in the church centre. SYG is for those in Secondary School. Interested? Contact Richard on the same click above.

ECO NEWS



INTRODUCTION TO HOME COMPOSTING.

Have you thought of home composting, a very environmentally friendly process. We will be setting out some ideas in future weeks, but to get started.

1. Choose type of bin. Can make your own using an old barrel or wooden pallets.

Purchase one from the Council or garden centre.

2. Choose location. Somewhere accessible, not too close to fences, sheds, outbuildings.

3. Best placed on open earth but with mesh to prevent unwanted visitors.

More useful tips will follow.

BOOKING ROOMS IN THE CENTRE

To book a room, please contact Susie at admin@stjohnssouthbourne.com or phone her on 01243 375576. You can look at the calender [click here](#), on the website to see what is happening in the Centre.



ACORN CHRISTIAN HEALING

On the second Saturday of each month at Surrey Healing Hub, St Alban's church, Hindhead, you can receive prayer either for yourself or for someone else. If you would like to know more [click here](#). Please contact Elaine Ware 01243 379518 for more information or if you would like a lift there.





MEN'S BREAKFASTS 22ND JAN

If you'd like to join some guys from St John's and head over for a breakfast in Chichester to hear an inspirational speaker, [click here to join the Men's events whatsapp group.](#) or [CLICK HERE](#) for more information.



GET CONNECTED

There's an app that links with our church calendar and website. It also provides a directory of church members. To get connected, download the churchsuite app to your device, and also [click here](#)



APCM DATE

We have a date for the APCM! It will be on Wednesday, 27th April at 7.30pm.



PCC Parochial Church Council

Why you should consider becoming a PCC member at St John's.

The most important role of PCC members is to support and encourage the spiritual life of the church, by prayer and by getting involved in church life.

The PCC is the main decision making body of the Church, and supports Matt and the other staff.

The members therefore decide on the type of services, how we reach out to our community, what we prioritise eg our Children's and family work, how we spend the Church's money.

Members are voted in at the Annual Meeting in April.

PCC members are trustees of the charity so they have some legal responsibilities. The PCC also sends representatives to the Deanery Synod, ie meeting of local Church of England parishes.

PCC meetings are held monthly, with some paperwork sent out before hand, so the time commitment for that is not onerous, 3-4 hours per month. PCC members are encouraged to get involved with one particular aspect of the church, eg children, tech, music, fabric.

If you would like an informal chat about maybe joining the PCC, [click here](#).



CONFIRMATIONS 5TH MAY

Thinking about taking the next step in your faith journey? Speak to Matt if you're considering confirmation or baptism on 01243 379934



SAVE YOUR STAMPS

Tina Lamplough is collecting stamps for the Leprosy Mission. There will be a box in the Centre to put them in. Perhaps, you could save your stamps from over the Christmas period and put them all in after New Year.



MORNING PRAYERS

There are Morning Prayer Meetings on Mondays and Thursdays at 8.30-9am on Zoom. If you would like to come to this, [Click here](#). We pray for a variety of topics and needs.

All welcome.



STREET PRAYERS [CLICK HERE](#)

This week we will be praying for Mosdell Road, New Road and Goodwood Court etc. We will also be remembering those connected with the Church in Bosham and further west.



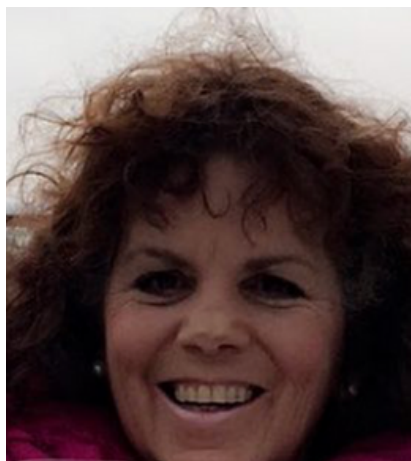
COVID SAFETY

Given the increase in cases, please wear masks throughout services. If you have any symptoms, please stay at home and arrange a PCR test and wait for a negative PCR result before attending.

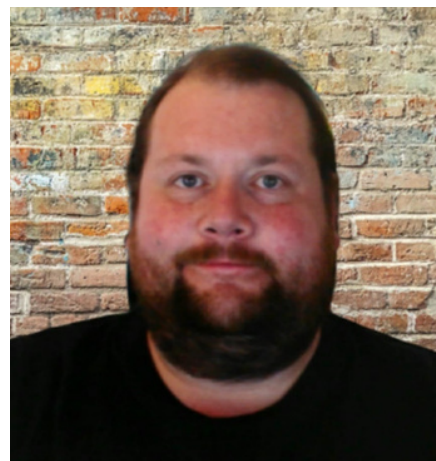
We thank you for your cooperation at this challenging time, particularly to those for whom isolation is especially a struggle.



Rev Matt Luff
Vicar
minister@
stjohnssouthbourne.com



Susie Bartlett
Church Administrator
admin@
stjohnssouthbourne.com



Jon Robinson
Church Warden
wardens@
stjohnssouthbourne.com



Sue McNeill
Church Warden
wardens@
stjohnssouthbourne.com



Alan McNeill
Church Treasurer
treasurer@
stjohnssouthbourne.com



Sarah MacLennan
PCC Secretary
admin@
stjohnssouthbourne.com



Richard Carter
Families and Youth
families@
stjohnssouthbourne.com



Kim Carter
Families and Youth
families@
stjohnssouthbourne.com



Christine Liddle
Safeguarding Officer
safeguarding@
stjohnssouthbourne.com