

ST JOHN'S WEEKLY NEWS

SUNDAY 15TH SEPTEMBER

Hello and Welcome.

This Sunday at 10am we continue through the Letter of James in the Bible, with the challenge to hear and then to do the things God's word calls us to, especially in how we speak and act towards others. At the 4pm it's our all-together service with Communion and the 'outrageous intervention' by God in the life of Daniel. Then at 7pm it's Holy Presence in Church, with time and space for you and God.



If you are visiting us on Sunday, please ask the welcome team for a welcome pack and prayer is usually available after our services. Our aim is: *'Together, to make Jesus known.'* We would love the chance to get to know you and share more of the life and faith of our church. I try to be around in our Church Centre on Tuesdays and Thursdays from 10am until midday, but do email me first if you're making a particular trip, or I'd love to chat and pray at another time. *God bless. Tom*

THIS SUNDAY AND NEXT

This Sunday (15th September):

10am Morning Worship // 4pm Communion // 7pm Holy Presence

Next Sunday (22nd September):

10am Communion // 4pm All-age Service // 6.30pm Prayer in Church

| Usual Sunday Services Pattern | 10AM | 4PM (TERM-TIME) | 6.30pm* |
|-------------------------------|-----------------|-------------------|-------------------|
| 1st Sunday | Morning Worship | All-age Service | Quiet Communion |
| 2nd Sunday | Communion | All-age Service | Online Prayer |
| 3rd Sunday | Morning Worship | All-age Communion | 7pm Holy Presence |
| 4th Sunday | Communion | All-age Service | In-Church Prayer |
| (5th Sunday) | Communion | All-age Service | |

More details and contact information are available:

Online: stjohnssouthbourne.com

Phone: (01243) 375576

Email: admin@stjohnssouthbourne.com

LATEST NEWS & UPDATES

Please send items for the Weekly News to the office by Wednesday.



The poppy project is moving into the next phase! We will be sewing poppies onto the backing on Saturday 14th September, 10am until 4pm. Lots of help needed please, either all day (bring a packed lunch) or just for an hour or two. If you have them please bring a sharp needle, bodkin, strong thread and scissors. If you have made poppies please let us have them before the 14th.



Film Club is on Tuesday, 10th September at 2.00pm. A powerful story set around a pub in a once thriving town. The arrival of Syrian refugees sets motions running high out of which a friendship develops between the Pub owner and a young Syrian with a camera. So unfolds a deeply moving drama about their fragility and hopes. Directed by Ken Loach.



The next **Walk and Talk** is on Sunday 22nd September. We will meet at 1.50pm outside the Church and return by 3.50pm in time for the 4.00pm service. Do come by yourself or with friends/neighbours.



World Biggest Coffee morning supporting Macmillan cancer support will take place at **Coffee Connect** on Tuesday 24th September 9.00am - 12 noon. Entertainment from Southbourne Upbeat Community Choir at 10.30am. Do bring your friends and neighbours along to this.



Chair Based Ballet classes are now taking place in the Lounge on Thursdays at 10am. Suitable for all ages, shapes and sizes. Improves your balance, joint mobility, strength and flexibility. **First lesson is Free.** Speak with Caroline on 07783 962700 or email c.twitchen@hotmail.com.



Harvest Festival week - 28th September until the 6th October.

Tuesday 1st - 4th October **Displays and Reflections in the Church.** There will a list of what is needed in the Church. There will be a reflective service at 7.30pm on Thursday 3rd October in Church, with the displays open from 7pm.

Sunday 6th October **Harvest Thanksgiving Service followed by Harvest lunch** in the Church.



Chichester Filling Station will restart again on Friday, 20th September at 7pm for a 7.15pm start at a new Venue. It will be at Eames Farm, Thorney Rd, Emsworth PO10 8DE. The speaker will be James Nickols and the worship provided by local worship teams. Please [click here](#) for more information.

MISSION OF THE MONTH

The Mission of the month is Family Support work.

To find out more information about this charity or donate to them, [click this link](#).



Street Prayers, Tuesday 9.30am on Zoom.

We will be praying for: -

.Southbourne Fields, Alfrey Close, Woodhouse Way, Lawley Avenue. Lawley Way, Lawley View, Collett Crescent, Burdett Gardens, Brewery Close & Witcher way. We will be remembering those who give us personal services – Refuse Collectors, Post persons, Milk and other deliveries and not forgetting our Street Cleaners.

WHAT'S ON DURING THE WEEK

Online Prayer is on Zoom [Click here to join](#) Meeting ID: 832 7893 7113. Passcode: 141540
Please check Churchsuite or our website for the full diary and let Susie know if something is missing.

Monday, 16 September

8:30am Morning Prayer Online (Zoom)
10:00am Homegroup (Lounge)

Tuesday, 17 September

9:00am Coffee Connect (Foyer)
9:30am Street Prayers on Zoom (Online)

Wednesday, 18 September

9:00am Coffee Connect (The Foyer)
9:30am Communion (Church)
10:15am Bible Study (Lounge)
7:30pm Singing Practise (Lounge)
8:00pm Men's Football (Bourne Leisure)

Thursday, 19 September

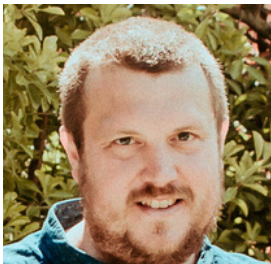
8:30am Morning Prayer Online (Zoom)
9:00am Coffee Connect (Foyer)
2:30pm Book Club (Lounge)
7:30pm Book Club (Lounge)

Friday, 20 September

9:45am Prayer and Praise (Lounge)
7:30pm Hide Tide (off site)

WHO TO CONTACT

All church emails are ...@stjohnssouthbourne.com



Rev. Tom Robson

Vicar

minister@...

Usually off Fridays



Susie Bartlett

Administrator

admin@...



Gill Prosser

Church Warden

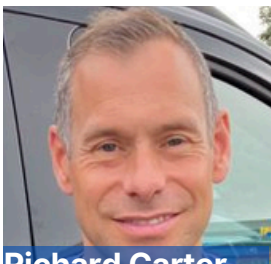
wardens@...



Gill Cruickshank

Church Warden

wardens@...

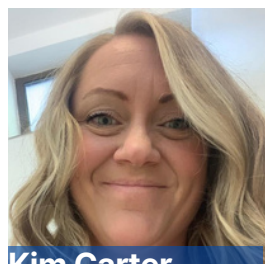


Richard Carter

Families and Youth

families@...

Usually off Tuesday
and Saturday



Kim Carter

Families and Youth

families@...

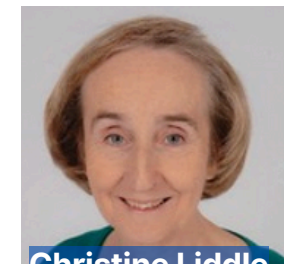
Usually off Tuesday
and Saturday



Ian MacLennan

Church Treasurer

treasurer@...



Christine Liddle

Safeguarding

safeguarding@...

Prayer requests for Church members can be emailed to: prayingfriends@stjohnssouthbourne.com